

# YOUTH EXHIBITS

**Supervisors..... Joyce Hulsebos**  
**..... Caramia Martinez**

**Entry Forms Due:** No later than Tuesday, April 5<sup>th</sup>, 2011, 5:00 PM. **Forms may be mailed, faxed or hand delivered to the Showground's Administration Office.** Fax number (805) 569-5595. .

**Please do not bring item in at this time.**

Uses the Junior Entry Form located in this Entry Handbook, on line at [www.sbfairandexpo.com](http://www.sbfairandexpo.com) or get one at the Earl Warren Showgrounds office. The following information **MUST** be included on the form: All personal information (age, grade, etc), division and description of item. Please use a separate form for each child. A separate form must be used for group entries with teacher/leader name.

**Entries Received:** Home Arts, Fine Arts, Arts & Crafts, and Literature:

Saturday April 9<sup>th</sup> .....10:00 AM to 4:00 PM  
Sunday April 10<sup>th</sup> .....10:00 AM to 4:00 PM  
Monday April 11<sup>th</sup> ..... 4:00 PM to 7:00 PM  
Tuesday April 12<sup>th</sup> ..... 4:00 PM to 7:00 PM

**Table Settings Received:**

Saturday April 16<sup>th</sup> .....10:00 AM to 1:00 PM

**Baked Goods & Preserved Foods Received:**

Saturday. April 16<sup>th</sup> .....10:00 AM to 1:00 PM

**Please no late entries.**

**Horticulture & Cut Flowers Received:**

Monday April 25<sup>th</sup> .....3:00 PM to 6:00 PM

**Entries Released for Pick-up: In Exhibit Building**

Monday May 2 ..... 12 noon to 6:00 PM

**Entry Fees:** None

## Youth Department Local Rules:

1. This is an open fair. You do not have to be a resident of Santa Barbara County. All items must be pre-entered by April 5<sup>th</sup>, 5:00 PM
2. Use the entry form provided in this Entry Handbook, or pick up a form at Earl Warren Showgrounds. Please include all personal information, division and description of item. Please use separate entry forms for each child. Use a separate form for group entry with teacher/leader name on form.

3. Bring entries to the Exhibit Building on assigned date & time. **PLEASE NO LATE ENTRIES.**

4. A Junior shall be classified by age groups as of January. 1, 2011:

JUNIOR 1	Ages Preschool, 4, 5, 6,
JUNIOR 2	Ages 7, 8, 9,
JUNIOR 3	Ages 10, 11, 12,
JUNIOR 4	Ages 13, 14, 15,
JUNIOR 5	Ages 16, 17, 18,

5. An exhibitor may only enter 15 items per division except table settings and group projects.

6. All entries must be prepared by the exhibitor within one year prior to the Opening date of the Fair.

7. Exhibitor's name needs to be on the **BACK** of entries.

8. Each entry in these divisions shall be made by youth.

9. The original signature of an **adult** is required on the entry form.

10. All entries will be scored on the Danish system. The Danish system of judging is based upon established standards of quality for each product. In this system, each exhibit is judged according to how well it meets that standard rather than how it compares with other exhibits. The Judges shall use the following guidelines:

1st	..... Superior	..... 92% - 100%
2nd	..... Good	..... 84% - 91%
3rd	..... Average	..... 70% - 83%

11. Exhibitors enrolled in any junior organization for which classes are offered elsewhere are not eligible to enter articles in this department as their Junior Organization Project (i.e. 4-H)

12. The Fair Management shall not be responsible for accidents or losses that may occur to any of the exhibitors or exhibits at a show, and the exhibitors shall hold the management harmless and indemnify it against any legal proceedings arising from such an accident or loss.

13. **All articles must be claimed on Monday May 2<sup>nd</sup> 12:00 PM to 6:00 PM**

14. All divisions are eligible to receive Best of Show ribbons & awards. Entries for consideration must have received a first place ribbon.

**ENTRY FORMS AVAILABLE ON-LINE  
@ SBFAIRANDEXPO.COM**



## COLORING CONTEST

Open to all students, preschool - 6th grade. Please use the form (or a photocopy) located in this Entry Handbook. Rules and entry information are on the back of the form.

### FEATURE BOOTHS SCHOOLS, CLUBS & ORGANIZATIONS

#### FEATURE EXHIBIT BOOTHS DIVISION 260

**Set-up, Saturday April 16<sup>th</sup>, 10:00 AM - 1:00 PM**

Feature exhibit booths provide schools, clubs & organizations an opportunity to acquaint the public with a specific phase of the club program. The booth can show what they have learned, activities in which they have participated, or contributions of their organization to the community. Judges will insist upon a high quality of products and materials used in the exhibit. A high scoring exhibit will be artistically arranged, colorful, attractive and well lighted.

#### Rules

1. Pre-enter by April 5<sup>th</sup>, 2011 (Space is limited.) Phone (805) 687-0766 for reservation.
  2. Feature booth shall be limited to one entry per school, club or organization.
  3. Booth must be designed, constructed and installed by school, club or organization members. Leaders may supervise only.
  4. The school, club or organization leader must sign entry forms.
  5. All booth materials must be stored within the booth.
- ALL PARTICIPANTS MUST BE SUPERVISED CLOSELY BY A RESPONSIBLE ADULT.

### CLASS, GROUP OR SCHOOL PROJECTS

A separate entry form is required using Class, Group or Club name. Please list student's names. Use average age of students to enter proper age group. Entries limited to space available. **You may display information on class project i.e., what they were studying, and school information.**

JR. 1	Division 261	JR. 4	Division 264
JR. 2	Division 262	JR. 5	Division 265
JR. 3	Division 263	PC	Division 266

**\*NOTE TO TEACHERS, TO MAKE IT EASY ON YOUR SELF PLEASE CHOOSE AN OPTION.**

1. If you want each child to be judged individually, **SEND a list of names with your entry form**
2. If you want project to be judged as a group/school project, **BRING a list of names with your project(s) ready to display.**

## SERVICE-LEARNING EXPOSITION!

Service-learning projects must have occurred from April 2010 to present. Project showcases must include a 36" by 48" tri-fold display board. Other projects or materials used in the project are encouraged for display.

Division 267 - Elementary School Projects  
Division 268 - Middle School Projects  
Division 269 - High School Projects  
Division 270 - Post Secondary School Projects

### SCHOOL YEARBOOK AND NEWSPAPER COMPETITION

May be 2010 or 2011 edition. Please use separate entry form. List Adviser's name and school name, address, and phone number and number of students.

Division 271 - Yearbook High School grades 9 – 12  
Division 272 - Yearbook Elementary 8th grade  
Division 273 - Yearbook Home School  
Division 274 - Newspaper High School grades 9 – 12  
Division 275 - Newspaper Elementary 8th grade  
Division 276 - Newspaper Home School

## ARTS & CRAFTS

### CERAMICS, CAST PIECES, KILN FIRED

JR. 1	Division 290
JR. 2	Division 291
JR. 3	Division 292
JR. 4	Division 293
JR. 5	Division 294

### CERAMICS, ORIGINAL, KILN FIRED

JR. 1	Division 296
JR. 2	Division 297
JR. 3	Division 298
JR. 4	Division 299
JR. 5	Division 300

### CLAY ART

JR. 1	Division 302
JR. 2	Division 303
JR. 3	Division 304
JR. 4	Division 305
JR. 5	Division 306

**BUILDING SETS**

JR. 1	Division 308
JR. 2	Division 309
JR. 3	Division 310
JR. 4	Division 311
JR. 5	Division 312

**ERECTOR SET/FOLLOWING DIRECTIONS**

JR. 1	Division 313
JR. 2	Division 314
JR. 3	Division 315
JR. 4	Division 316
JR. 5	Division 317

**ERECTOR SET/FREE STYLE**

JR. 1	Division 318
JR. 2	Division 319
JR. 3	Division 320
JR. 4	Division 321
JR. 5	Division 322

**K'NEX**

JR. 1	Division 323
JR. 2	Division 324
JR. 3	Division 325
JR. 4	Division 326
JR. 5	Division 327

**LEGO/BOX SET**

JR. 1	Division 328
JR. 2	Division 329
JR. 3	Division 330
JR. 4	Division 331
JR. 5	Division 332

**LEGO/FREE STYLE**

JR. 1	Division 333
JR. 2	Division 334
JR. 3	Division 335
JR. 4	Division 336
JR. 5	Division 337

**TINKER TOYS/KIT**

JR. 1	Division 338
JR. 2	Division 339
JR. 3	Division 340
JR. 4	Division 341
JR. 5	Division 342

**TINKER TOYS/FREE STYLE**

JR. 1	Division 343
JR. 2	Division 344
JR. 3	Division 345
JR. 4	Division 346
JR. 5	Division 347

**Box & Kits Judged on:**

1. No missing pieces
2. Accurately built
3. How well constructed
4. Extra scenery ok

**HOBBY CRAFTS**

JR. 1	Division 348
JR. 2	Division 349
JR. 3	Division 350
JR. 4	Division 351
JR. 5	Division 352

**GIFT BASKET**

JR. 1	Division 353
JR. 2	Division 354
JR. 3	Division 355
JR. 4	Division 356
JR. 5	Division 357

**JEWELRY**

JR. 1	Division 358
JR. 2	Division 359
JR. 3	Division 360
JR. 4	Division 361
JR. 5	Division 362

**ORNAMENTAL DECORATION**

JR. 1	Division 363
JR. 2	Division 364
JR. 3	Division 365
JR. 4	Division 366
JR. 5	Division 367

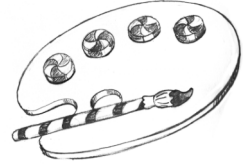
**PAPER CRAFT**

JR. 1	Division 368
JR. 2	Division 369
JR. 3	Division 370
JR. 4	Division 371
JR. 5	Division 372

**RUBBER STAMP ART**

JR. 1	Division 373
JR. 2	Division 374
JR. 3	Division 375
JR. 4	Division 376
JR. 5	Division 377

# FINE ARTS



## SCRAP BOOK

JR. 1	Division 378
JR. 2	Division 379
JR. 3	Division 380
JR. 4	Division 381
JR. 5	Division 382

## STENCILED ITEMS

JR. 1	Division 383
JR. 2	Division 384
JR. 3	Division 385
JR. 4	Division 386
JR. 5	Division 387

## STRING ART

JR. 1	Division 388
JR. 2	Division 389
JR. 3	Division 390
JR. 4	Division 391
JR. 5	Division 392

## STRUCTURES

JR. 1	Division 393
JR. 2	Division 394
JR. 3	Division 395
JR. 4	Division 396
JR. 5	Division 397

## WOODCRAFTS, ORIGINAL

JR. 1	Division 398
JR. 2	Division 399
JR. 3	Division 400
JR. 4	Division 401
JR. 5	Division 402

## WOODCRAFTS, PURCHASED PAINTED/DECORATED

JR. 1	Division 403
JR. 2	Division 404
JR. 3	Division 405
JR. 4	Division 406
JR. 5	Division 407

## MISCELLANEOUS ART PROJECTS

JR. 1	Division 408
JR. 2	Division 409
JR. 3	Division 410
JR. 4	Division 411
JR. 5	Division 412

All framed pictures should be ready to hang, for the safety of your picture. All entries must be **completely** dry. Please label your entry with your name on back.

## ACRYLIC

JR. 1	Division 413
JR. 2	Division 414
JR. 3	Division 415
JR. 4	Division 416
JR. 5	Division 417

## BLACK AND WHITE, ANY MEDIA

JR. 1	Division 418
JR. 2	Division 419
JR. 3	Division 420
JR. 4	Division 421
JR. 5	Division 422

## COLORED PENCIL

JR. 1	Division 423
JR. 2	Division 424
JR. 3	Division 425
JR. 4	Division 426
JR. 5	Division 427

## COMPUTER GENERATED ART

JR. 1	Division 428
JR. 2	Division 429
JR. 3	Division 430
JR. 4	Division 431
JR. 5	Division 432

## COMPUTER ENHANCED ART

JR. 1	Division 433
JR. 2	Division 434
JR. 3	Division 435
JR. 4	Division 436
JR. 5	Division 437

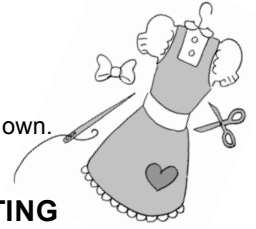
## CRAYON

JR. 1	Division 438
JR. 2	Division 439
JR. 3	Division 440
JR. 4	Division 441
JR. 5	Division 442

## CLOTHING & TEXTILES

Please indicate on entry form

1. How many years of experience.
2. Was it a school project?
3. Did you use a pattern or create your own.



### FELT PEN, COLOR

JR. 1	Division 443
JR. 2	Division 444
JR. 3	Division 445
JR. 4	Division 446
JR. 5	Division 447

### FINGER PAINTING

JR. 1	Division 448
JR. 2	Division 449

### OILS

JR. 1	Division 450
JR. 2	Division 451
JR. 3	Division 452
JR. 4	Division 453
JR. 5	Division 454

### PASTELS

JR. 1	Division 455
JR. 2	Division 456
JR. 3	Division 457
JR. 4	Division 458
JR. 5	Division 459

### WATERCOLORS

JR. 1	Division 461
JR. 2	Division 462
JR. 3	Division 463
JR. 4	Division 464
JR. 5	Division 465

### MIXED TECHNIQUE

JR. 1	Division 467
JR. 2	Division 468
JR. 3	Division 469
JR. 4	Division 470
JR. 5	Division 471

### CROCHET/KNITTING

JR. 1	Division 473
JR. 2	Division 474
JR. 3	Division 475
JR. 4	Division 476
JR. 5	Division 477

### NEEDLE ART

JR. 1	Division 479
JR. 2	Division 480
JR. 3	Division 481
JR. 4	Division 482
JR. 5	Division 483

### SEWING

JR. 1	Division 485
JR. 2	Division 486
JR. 3	Division 487
JR. 4	Division 488
JR. 5	Division 489

### WEAVING

JR. 1	Division 490
JR. 2	Division 491
JR. 3	Division 492
JR. 4	Division 493
JR. 5	Division 494

## COLLECTIONS

Rules:

Give a brief description of your collection (i.e. why it is important to you, how the collections started, etc.)

JR. 1	Division 495
JR. 2	Division 496
JR. 3	Division 497
JR. 4	Division 498
JR. 5	Division 499

## HISTORY

JR. 1	Division 500
JR. 2	Division 501
JR. 3	Division 502
JR. 4	Division 503
JR. 5	Division 504

### MISSIONS

JR. 1	Division 505
JR. 2	Division 506
JR. 3	Division 507
JR. 4	Division 508
JR. 5	Division 509

## LITERATURE

If written in a language other than English, English translation must accompany the paper.

### CREATIVE WRITING, FICTION

JR. 1	Division 510
JR. 2	Division 511
JR. 3	Division 512
JR. 4	Division 513
JR. 5	Division 514

### CREATIVE WRITING, NON FICTION

JR. 1	Division 515
JR. 2	Division 516
JR. 3	Division 517
JR. 4	Division 518
JR. 5	Division 519

### CREATIVE WRITING, WITH PROPS

JR. 1	Division 521
JR. 2	Division 522
JR. 3	Division 523
JR. 4	Division 524
JR. 5	Division 525

### POETRY

JR. 1	Division 527
JR. 2	Division 528
JR. 3	Division 529
JR. 4	Division 530
JR. 5	Division 531

## CREATE A PICTURE BOOK

Rules:

1. To be designed as a book or an illustrated manuscript
2. Must have a rigid cover. Example: sewn, staples or in a binder.
3. Text may be typed or printed.

JR. 1	Division 533
JR. 2	Division 534
JR. 3	Division 535
JR. 4	Division 536
JR. 5	Division 537

## PHOTOGRAPHY

Photography Local Rules:

1. Titles are encouraged.
2. We encourage mounting with no mount larger than 16 x 20 or no smaller than 5 X 7. Maximum width of matting 3". Directional arrow on prints in question as to how to hang. No pictures of pictures are permitted.
3. No print previously entered in the Santa Barbara Fair & Expo is eligible. Prints to be taken between April 5th, 2011 and Fair 2011.
4. All possible care will be given to all prints entered. However, the Fair can not accept responsibility for any loss or damage.

### BLACK AND WHITE

JR. 1	Division 539
JR. 2	Division 540
JR. 3	Division 541
JR. 4	Division 542
JR. 5	Division 543
PC	Division 544

### COLOR

JR. 1	Division 545
JR. 2	Division 546
JR. 3	Division 547
JR. 4	Division 548
JR. 5	Division 549
PC	Division 550

### COMPUTER ENHANCED

JR. 1	Division 551
JR. 2	Division 552
JR. 3	Division 553
JR. 4	Division 554
JR. 5	Division 555

**POLAROID**

JR. 1	Division 556
JR. 2	Division 557
JR. 3	Division 558
JR. 4	Division 559
JR. 5	Division 560
PC	Division 561

**FILM**

JR. 1	Division 562
JR. 2	Division 563
JR. 3	Division 564
JR. 4	Division 565
JR. 5	Division 566
PC	Division 567

**PHOTO STORY**

A series of 3 to 5 pictures that tell a story. Nature's Seasons, flower's progression, child's first haircut, etc. mounted individually or grouped in one display and numbered in proper sequence.

JR. 1	Division 568
JR. 2	Division 569
JR. 3	Division 570
JR. 4	Division 571
JR. 5	Division 572

**UNDERWATER**

JR. 1	Division 573
JR. 2	Division 574
JR. 3	Division 575
JR. 4	Division 576
JR. 5	Division 577

**SCIENCE**

Not limited to just Collections. Collections must have been collected within two years of the opening day of the fair.

**ENTOMOLOGY**

JR. 1	Division 578
JR. 2	Division 579
JR. 3	Division 580
JR. 4	Division 581
JR. 5	Division 582

**FORESTRY**

JR. 1	Division 583
JR. 2	Division 584
JR. 3	Division 585
JR. 4	Division 586
JR. 5	Division 587

**WILDLIFE**

JR. 1	Division 588
JR. 2	Division 589
JR. 3	Division 590
JR. 4	Division 591
JR. 5	Division 592

**MARINE SCIENCE**

JR. 1	Division 594
JR. 2	Division 595
JR. 3	Division 596
JR. 4	Division 597
JR. 5	Division 598

**COMPUTER SCIENCE**

JR. 1	Division 600
JR. 2	Division 601
JR. 3	Division 602
JR. 4	Division 603
JR. 5	Division 604

**ROCKETRY, AEROSPACE**

JR. 1	Division 606
JR. 2	Division 607
JR. 3	Division 608
JR. 4	Division 609
JR. 5	Division 610

**ELECTRICITY**

JR. 1	Division 612
JR. 2	Division 613
JR. 3	Division 614
JR. 4	Division 615
JR. 5	Division 616

**ENVIRONMENTAL FRIENDLY**

JR. 1	Division 618
JR. 2	Division 619
JR. 3	Division 620
JR. 4	Division 621
JR. 5	Division 622

**MISCELLANEOUS PROJECTS**

JR. 1	Division 624
JR. 2	Division 625
JR. 3	Division 626
JR. 4	Division 627
JR. 5	Division 628

# BAKED & PRESERVED FOODS

**ALL ENTRIES MUST HAVE LIST OF INGREDIENTS INCLUDED WITH ENTRY.**

**Entries Received:** Saturday, April 16, 10AM – 1:00PM  
 Entries should consist of: Six (6): cookies, candies, bars  
 Three (3): cupcakes, muffins, biscuits, one half (1/2): loaf bread, cake, pie

Whole-decorated cake may use dummy base. All baked items except decorated cakes should be on pie pans, or plates, which are disposable. Please cover with any saran wrap, baggy, etc. **EXCEPTION:** Decorated Cakes. NO refrigerated items.

Please use icing that will hold up during fair time. Royal or Butter cream icing would be recommended. These are available at any cake supply store. **Any entry without ingredient list will be turned away.**

## CONFECTIONS

R. 1	Division 630
JR. 2	Division 631
JR. 3	Division 632
JR. 4	Division 633
JR. 5	Division 634

## DECORATED ITEMS

JR. 1	Division 636
JR. 2	Division 637
JR. 3	Division 638
JR. 4	Division 639
JR. 5	Division 640

## BAKED GOODS

JR. 1	Division 642
JR. 2	Division 643
JR. 3	Division 644
JR. 4	Division 645
JR. 5	Division 646

# PRESERVED FOODS

JR. 1	Division 648
JR. 2	Division 649
JR. 3	Division 650
JR. 4	Division 651
JR. 5	Division 652

No preserved meat, fowl or fish accepted. Each exhibitor must bring two jars of preserved foods. One jar will be opened and judged the other for display. All opened jars must be picked up by April 27. Any jars not picked up by that time will be discarded. Entry Sheets must list the type of produce and the method or process used. Low acid foods must be canned under pressure, no paraffin seals. All canning exhibits must be sealed jars. All dried food in 1/2 pint jars. Please place a label with your name on the bottom of your jars.



# TABLE SETTINGS

## Single Place Setting

JR. 1	Division 654
JR. 2	Division 655
JR. 3	Division 656
JR. 4	Division 657
JR. 5	Division 658

## Four Place Settings

JR. 1	Division 660
JR. 2	Division 661
JR. 3	Division 662
JR. 4	Division 663
JR. 5	Division 664

Table settings to be received: Saturday April 16 between 10:00 AM and 1:00pm. For single place settings, an 18"x22" tabletop will be provided for your use. Your layout should include one or two place settings and your centerpiece. A 48" x 30" table will be provided for the four place settings categories. All work must be done by the exhibitor. Tablecloth should have 10-14" overhang or a tabletop size cover, any texture. Check a cookbook for proper table settings.

# HORTICULTURE

## Entries Received:

Monday, April 25, 3:00 PM – 6:00 PM.

### Rules:

1. Entries must have been grown by the exhibitor.
2. All State rules apply. (Available upon request)
3. Please place on a disposable plate.

## POTTED PLANTS

DIVISION - 666 - 12 YEARS OF AGE & UNDER.

DIVISION - 667 - 13-18 YEARS OF AGE.

## ARRANGEMENTS

### Entries Received:

Saturday, April 24, 9:00 AM – 1:00 PM

DIVISION - 668 - 12 YEARS OF AGE & UNDER.

DIVISION - 669 - 13 - 18 YEARS OF AGE

## CUT FLOWERS

No pre-entry

DIVISION - 670 – 12 YEARS OF AGE & UNDER

DIVISION - 671 – 13-18 YEARS OF AGE

## DRESS YOUR FAVORITE FRUIT OR VEGETABLE

Fruit/vegetable must be dressed. You may purchase your fruit/vegetable.

DIVISION – 672 – 12 YEARS OF AGE & UNDER

DIVISION – 673 – 13-18 YEARS OF AGE

DIVISION - 674 – 12 YEARS OF AGE & UNDER

DIVISION – 675 – 13-18 YEARS OF AGE

Produce characters must be reinforced and placed on a strong and disposable base not to exceed 12" X 16". Only all natural materials allowed.

# FRUITS & VEGETABLES

## Entries Received:

Monday, April 25, 3:00 PM – 6:00 PM

DIVISION 676- CITRUS

DIVISION - 677 - SUBTROPICAL

DIVISION – 678 - PLATE DISPLAY

DIVISION – 679 - AVOCADOS

DIVISION - 680 - VEGETABLES

DIVISION – 681 - UNUSUAL OR LARGEST FRUIT OR VEGETABLE